

Project Update:

Rhode Island

Community Resource Inventory

“aka the CRI in RI”

THE
UNIVERSITY
OF RHODE ISLAND

??r ? ? ? ? ? ? ? ? ? ?
? ? ? ? ? ? ? ? ? ? ? ? ? ?
? ? ? ? ? ? ? ? ? ? ? ? ? ? ?
??r ? ? ? ? ? ? ? ? ? ?

Welcome!

The purpose of this website is to connect you with easy-to-use online maps of Rhode Island. We focus on sharing those maps that are available via online map services and can be accessed by a variety of software programs, including Google Earth, Esri ArcGIS products, and others.

The Atlas is not complete. Additional content is still being introduced, maps are being tweaked, and not everything is working quite exactly as planned yet.

Your constructive comments at this early stage are invaluable! After you've had a chance to explore the Atlas, [please share your thoughts using this brief online survey form](#). The development team reads every comment, and will do its best to incorporate your ideas.

Get started exploring the Atlas by using one of the map browsing options below!

Topics

maps organized by topic areas

Map Index

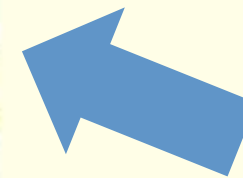
list of all available maps

Communities

maps organized by cities and towns

Watersheds

maps organized by watersheds



Map Index

[Aerial Photographs \(1997\)](#)

[Aerial Photographs \(2003-2004\)](#)

[Aerial Photographs \(2008\)](#)

[Average Annual Precipitation](#)

[Conservation Lands](#)

[Cropland](#)

[Elevation \(NED\)](#)

[Farmland Soils](#)

[Forested Land \(NLCD\)](#)

[Impaired Waters](#)

[Impervious Surfaces](#)

[Land Use](#)

[Municipal Boundaries \(CT, MA, RI\)](#)

[Pasture](#)

[Riparian Land Use](#)

[Slope \(NED\)](#)

[Soil Drainage Classes](#)

[Soil Erosion Index](#)

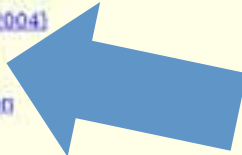
[Soil Hydrologic Groups](#)

[Soil Hydrologic Groups and Estimated Depth to Seasonal High Water Table](#)

[Surface Water \(NHD\)](#)

[Wellhead Protection Areas](#)

[Wetlands \(NWD\)](#)



Aerial Photographs (2008)

This map consists of georeferenced aerial photographs that have been licensed by [Pictometry International](#) to the [Rhode Island Enhanced 911 Uniform Emergency Telephone System](#), then afterwards sublicensed to the University of Rhode Island. The photographs were recorded over a period of dates between 4/13/08 and 5/15/08. You may also be interested in exploring the oblique "bird's eye view" photographs that are available from Microsoft's [Live Search Maps](#) website.

More detailed information about how this map was created, and the data featured within, is available in this map's metadata record (this feature is coming shortly!)

The following viewing options are available for this map:

Select a Community:

Select a Watershed:

Want to choose your own custom area? [Explore this Map \(Interactive Map\)](#)

For adventurous users (this is still being tested out): [View this map using Google Earth](#)

And for experienced users: [View this map using your GIS](#)



GREENWICH BAY WATERSHED

Introduction

GREENWICH BAY WATERSHED

GREENWICH BAY WATERSHED

GREENWICH BAY WATERSHED

Elevation (NED)

GREENWICH BAY WATERSHED

Conservation Lands

GREENWICH BAY WATERSHED

Soil Drainage Classes



	Approximate Acreage	Percent of Watershed
Excessively drained	1602	9.6
Somewhat excessively drained	723	4.3
Well drained	4190	25.2
Moderately well drained	1358	8.2
Somewhat poorly drained	0	0.0
Poorly drained	1185	7.1
Very poorly drained	204	1.2

0 1 2 Miles



<http://www.callcentrehelper.com/images/stories/Q2-2008/negativity-change1.jpg>

South King
Communi



University of
- Rhode Island
- Geospatial Ex

South
Topogra



South
Conser



Municipal
Public Ac
Acce
Acce
Acce

South
Hydr



Hydr
Wetl

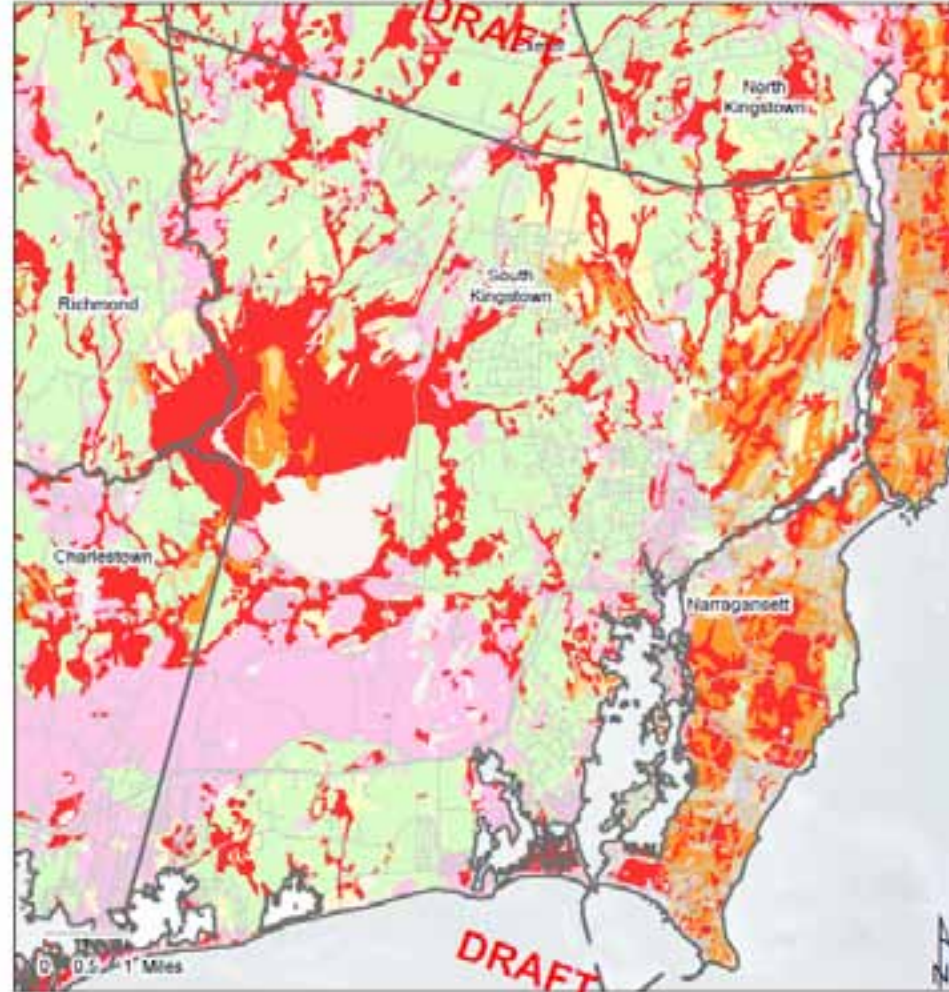
South
Flood H



0.2%
for P
Other
New
insur
A; A
X

South Kingstown
Hydrologic Soil Group and Water Table Depth

Community Resource Prof
Rhode Island Digital At
<http://www.edc.un.edu/at>



A, > 6 ft	C, 1.5 - 3.5 ft
B, = 6 ft	C/D, 0 - 1.5 ft, Hydr
B, 1.5 - 3.5 ft	Variable/NoData
C, > 6 ft	

Data Source: R/I
<http://www.edc.uri.edu/>
Date Produced: 9/22/03
Note: Map production date is N
indicative of currentness of underly
data. See the accompany
description for more informat

Community Resource Profile Elements

- Base Maps
 - Overview
 - Reference Points
 - Aerial Photography
- Elevation & Slope
- Land Use / Land Cover
 - Land Use Classifications
 - Conservation Lands
 - Impervious Surfaces
 - Impervious Surface Density
- Water Resources
 - Lakes, Ponds, Rivers, Streams
 - Watersheds
 - Wetlands & Hydric Soils
 - Flood Hazard Areas
- Drinking Water
 - Water Supply Watersheds
 - Groundwater Recharge Areas & Reservoirs
 - Wellhead Protection Areas
- Water Quality and Impairments
 - Special Resource Protection Waters
 - Water Quality Assessments
 - Water Quality Standards
- Hydrologic Soil Group and Depth to Water Table
- Natural Heritage Areas
- Scenic & Cultural Points of Interest
- Recreation
- Regulatory Overlays & Regulated Discharges
- Utilities
- Demographic
- Transportation
 - Bus Routes & Stops

About 20 total maps & associated descriptions after these elements are all combined.




ArcGIS

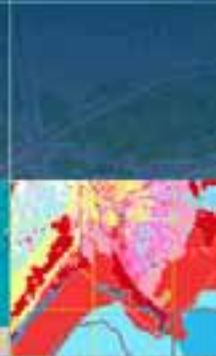
GALLERY

MAP

GROUPS

MY CONTENT

Find maps, applications and more... 



ArcGIS Online

Maps and Apps for Everyone

View the Gallery

See maps and apps from people and organizations worldwide.

View Groups

Work together with the people who share your interest.

Make a Map

Create a map you can view on the web, desktop and mobile devices.

Start ArcGIS Explorer Online

Use a rich application for working with ArcGIS online maps.

Learn More

ArcGIS is an online system for using geographic information everywhere.



<http://www.arcgis.com>

Home

Start Presentation - Presentation

Edit Presentation

Search

Identify + Measure

Map Notes

Folder Bookmark

Basemap

Add Content +

Map Contents

Draw Order

Map Legend

Map Contents

- Bookmarks
- Base Maps
 - Municipal Boundaries
 - Neighboring States mask
 - Reference Points
- Aerial Photography
 - 2008 Pictometric LiDAR
 - 2006 Save the Bay
 - 2003-04 RIDOT orthophoto
 - 2002 USGS
 - RI Digital Atlas Background
- Elevation and Slope
- Land Use / Land Cover
- Water Resources
- Soils
- Habitats
- Scenic & Cultural
- Recreation
- Regulatory Information
- Utilities
- Demographic
- Transportation
- Bing Maps Road



Home

Start Presentation - Presentation Presentation

Edit Presentation

Search

Identify Measure

Map Notes

Folder Bookmark

Basemap Add Content

Map Contents

Draw Order

Map Legend

- ### Map Contents
- Bookmarks
 - Basemaps
 - Bing Maps Road
 - Municipal Boundaries
 - Neighboring States mask
 - Reference Points
 - Aerial Photography
 - 2008 Pictometric Loers
 - 2006 Save the Bay
 - 2003-04 RIDOT orthop
 - 2002 USGS
 - RI Digital Atlas Backgrou
 - Elevation and Slope
 - Land Use / Land Cover
 - Water Resources
 - Soils
 - Habitats
 - Scenic & Cultural
 - Recreation
 - Regulatory Information
 - Utilities
 - Demographic
 - Transportation

Basemap Add Content

Bing Maps Aerial	Bing Maps Hybrid	Bing Maps Road
Imagery	Imagery with Labels	Streets
Topographic	USA Topo Maps	OpenStreetMap
Terrain	Terrain with Labels	Shaded Relief



Home

Start Presentation - Presentation

Edit Presentation

Search

Identify + Measure

Map Notes

Create

Folder Bookmark

Basemap

Add Content - Map

Map Contents

Draw Order

Map Legend

- ### Map Contents
- Bookmarks
 - Base Maps
 - Municipal Boundaries
 - Neighboring States mask
 - Reference Points
 - Aerial Photography
 - 2008 Pictometric Liens
 - 2006 Save the Bay
 - 2003-04 RIDOT orthop
 - 2002 USGS
 - RI Digital Atlas Backgrou
 - Elevation and Slope
 - Land Use / Land Cover
 - Water Resources
 - Soils
 - Habitats
 - Scenic & Cultural
 - Recreation
 - Regulatory Information
 - Utilities
 - Demographic
 - Transportation
 - Imagery with Labels



Home

Start Presentation - Presentation Presentation

Edit Presentation

Search

Tools

Identify + Measure

Map Notes

Create

Folder Bookmark

Basemap

Add Content - Map

Map Contents

Draw Order

Map Legend

Map Contents

- Bookmarks
- Base Maps
 - Municipal Boundaries
 - Neighboring States mask
 - Reference Points
 - Aerial Photography
 - 2008 Pictometric Liens
 - 2006 Save the Bay
 - 2003-04 RIDOT orthop
 - 2002 USGS
 - RI Digital Atlas Backgrou
 - Elevation and Slope
 - Land Use / Land Cover
 - Water Resources
 - Soils
 - Habitats
 - Scenic & Cultural
 - Recreation
 - Regulatory Information
 - Utilities
 - Demographic
 - Transportation
- Topographic



Home

Start Presentation - Presentation

Edit Presentation

Search

Tools

Identify - Measure

Map Notes

Create

Folder Bookmark

Basemap

Add Content - Map

Map Contents

Draw Order

Map Legend

Map Contents

- Bookmarks
- Base Maps
- Municipal Boundaries
- Neighboring States mask
- Reference Points
- Aerial Photography
- 2008 Pictometric Licensed Imag
- 2006 Save the Bay
- 2003-04 RIDOT orthophotogr
- 2002 USGS
- RI Digital Atlas Background Map
- Elevation and Slope
- Land Use / Land Cover
- Water Resources
- Soils
- Habitats
- Scenic & Cultural
- Recreation
- Regulatory Information
- Utilities
- Demographic
- Transportation

Topographic



Home

Start Presentation - Presentation

Edit Presentation - Presentation

Search

Identify - Measure

Map Notes

Create

Folder Bookmark

Basemap

Add Content - Map

Map Contents

Draw Order

Map Legend

Map Contents

- Bookmarks
- Base Map
- Municipal Boundaries
- Neighboring States mask
- Reference Points
- Aerial Photography
 - 2008 Pictometric Licensed Dr
 - 2006 Save the Bay
 - 2003-04 R2DOT orthophoto
 - 2002 USGS
- RI Digital Atlas Background Ma
- Elevation and Slope
- Land Use / Land Cover
- Water Resources
- Soils
- Soil Permeability and Depth to
- Habitats
- Scenic & Cultural
- Recreation
- Regulatory Information
- Utilities
- Demographic
- Transportation
- Topographic



Home

Start Presentation - Presentation

Edit Presentation - Presentation

Search

Identify - Measure

Map Notes

Folder

Bookmark

Basemap

Add Content - Map

Map Contents

Draw Order

Map Legend

- ### Map Contents
- Bookmarks
 - Base Maps
 - Municipal Boundaries
 - Neighboring States ma
 - Reference Points
 - Aerial Photography
 - 2008 Pictometric Lic
 - 2006 Save the Bay
 - 2003-04 RIDOT ort
 - 2002 USGS
 - RI Digital Atlas Backgn
 - Elevation and Slope
 - Land Use / Land Cover
 - 2003-04 Land Use / La
 - Conservation Lands (S
 - Conservation Lands (M
 - Impervious Surfaces
 - Water Resources
 - Soils
 - Habitats
 - Scenic & Cultural
 - Recreation
 - Regulatory Information
 - Utilities
 - Demographic
 - Transportation



Home

Start Presentation - Presentation

Edit Presentation - Presentation

Search

Identify - Measure

Map Notes

Folder

Bookmark

Basemap

Add Content - Map

Map Contents

Draw Order

Map Legend

- ### Map Contents
- Bookmarks
 - Base Maps
 - Municipal Boundaries
 - Neighboring States ma
 - Reference Points
 - Aerial Photography
 - 2008 Pictometric Lic
 - 2006 Save the Bay
 - 2003-04 RIDOT art
 - 2002 USGS
 - RI Digital Atlas Backgn
 - Elevation and Slope
 - Land Use / Land Cover
 - 2003-04 Land Use / La
 - Conservation Lands (S
 - Conservation Lands (M
 - Impervious Surfaces
 - Water Resources
 - Soils
 - Habitats
 - Scenic & Cultural
 - Recreation
 - Regulatory Information
 - Utilities
 - Demographic
 - Transportation



Home

Start Presentation - Presentation

Edit Presentation

Search

Identify - Measure

Map Notes

Folder Bookmark

Create

Basemap

Add Content - Map

Map Contents

Draw Order

Map Legend

Map Contents

- Bookmarks
- Base Map
- Municipal Boundaries
- Neighboring States mask
- Reference Points
- Aerial Photography
- 2008 Pictometric License
- 2006 Save the Bay
- 2003-04 R2DOT orthophoto
- 2002 USGS
- RI Digital Atlas Background
- Elevation and Slope
- Land Use / Land Cover
 - 2003-04 Land Use / Land C
 - Conservation Lands (State)
 - Conservation Lands (Municip
 - Impervious Surfaces
- Water Resources
- Soils
 - Soil Permeability and Depth
- Habitats
- Scenic & Cultural
- Recreation
- Regulatory Information
- Utilities
- Demographic



Home

Start Presentation - Presentation

Edit Presentation - Presentation

Search

Identify - Measure

Map Notes

Folder Bookmark

Create

Basemap

Add Content - Map

Map Contents

Draw Order

Map Legend

Map Legend

- Impervious Surfaces
 - Impervious Surfaces (2003-04)
 - impervious
- Soil Permeability and Depth to Water
 - Hydrologic Soil Group and Water T
 - Very rapid, >6 ft.
 - Moderate, > 6 ft.
 - Moderate, 1.5 - 3.5 ft.
 - Slow, > 6 ft.
 - Slow, 1.5 - 3.5 ft.
 - Slow/Wetland, 0 - 1.5 ft.
 - Variable/NoData
- > 2008 Pictometric Licensed Images



Home Tools

Start Presentation - Presentation

Edit Presentation

Search

Identify - Measure

Map Notes

Create

Folder Bookmark

Basemap

Add Content - Map

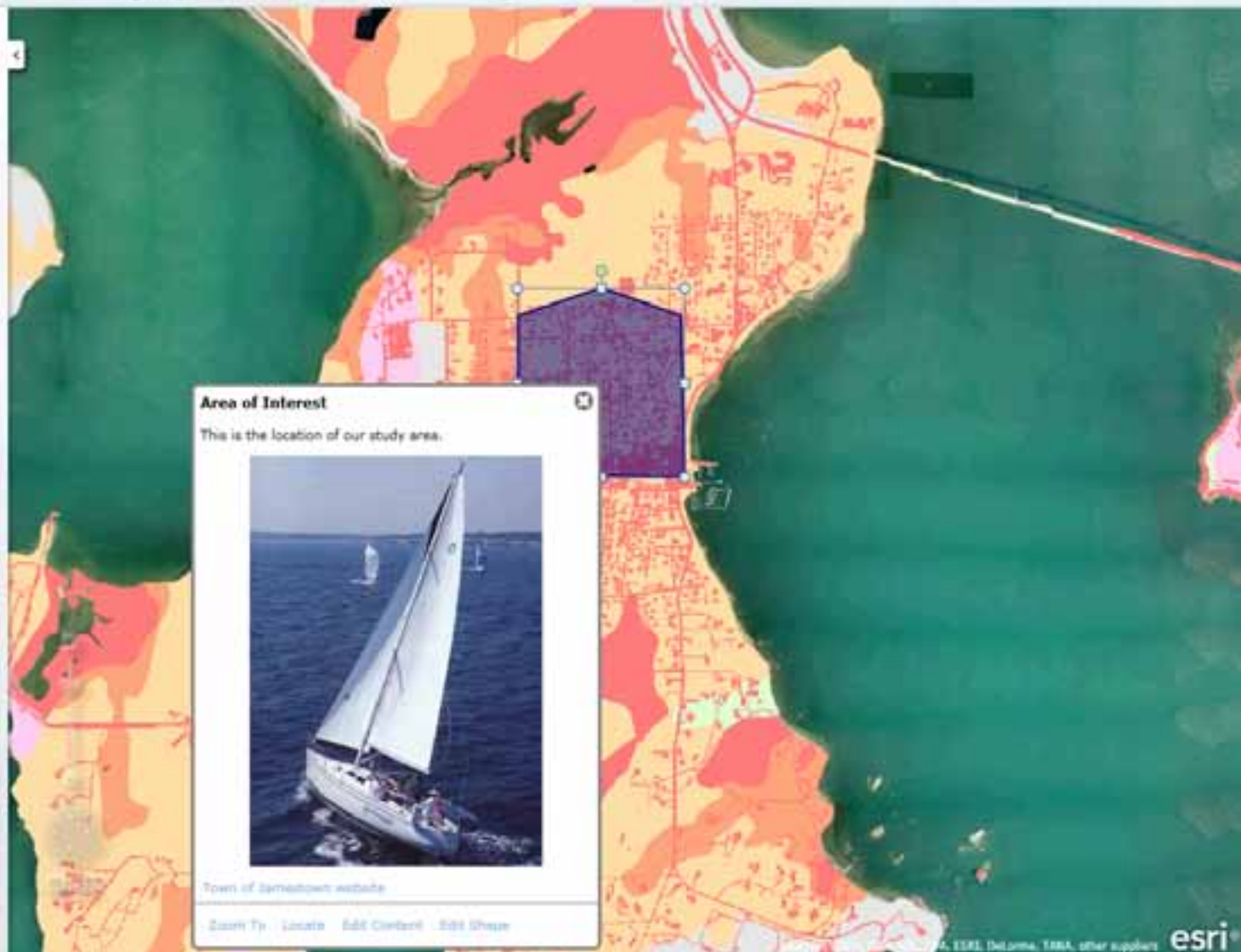
Map Contents

Draw Order

Map Legend

Map Contents

- Area of Interest
- Bookmarks
- Base Maps
- Municipal Boundaries
- Neighboring States mask
- Reference Points
- Aerial Photography
- 2008 Photometric Licensee
- 2006 Save the Bay
- 2003-04 RIDOT orthopho
- 2002 USGS
- RI Digital Atlas Background
- Elevation and Slope
- Land Use / Land Cover
- 2003-04 Land Use / Land C
- Conservation Lands (State)
- Conservation Lands (Munic
- Impervious Surfaces
- Water Resources
- Soils
- Soil Permeability and Depth
- Habitats
- Scenic & Cultural
- Recreation
- Regulatory Information
- Utilities



Looking Ahead...

- To-Do List
 - Finish creating and polishing maps
 - Complete map descriptions
 - Calculate basic statistics for selected maps
 - Complete CRI section of RI Digital Atlas website
- Short-Term Timeline
 - November 2010: release for external review
 - December 2010: run initial workshop
 - December 2010: publicly release and market

Looking Ahead...

- Longer-Term Goals
 - Maintain profiles with up-to-date data in cooperation with other partners & projects
 - Possible partnership with RI Statewide Planning Program to help further standardize Comprehensive Plans



<http://www.jamestownri.net/media2/photos/granuelle1.jpg>

Greg Bonyngé
Geospatial Extension Program
University of Rhode Island

greg@edc.uri.edu

Lorraine Joubert
Rhode Island NEMO
University of Rhode Island

ljoubert@uri.edu