

# Helping Communities Reach Watershed Goals: Regional Water Quality Assistance Network



Eve Brantley, PhD

Dept of Agronomy and Soils, Auburn University

Alabama Cooperative Extension System, Water Resource Specialist

brantef@auburn.edu



**THE POWER OF**

**BOND0!!**



# Top 10 Reasons Why Bondo Will Solve Your Watershed Concerns

1. Fills data gaps
2. Keeps stakeholders together
3. Builds cohesive teams
4. Strengthens partnerships
5. Repairs broken riparian cardoors
6. Builds a good base
7. TMBL implementation
8. Jobs program for rednecks
9. Hands-on applications
10. Starts off rough, finishes smooth



# Solving Real Watershed Concerns

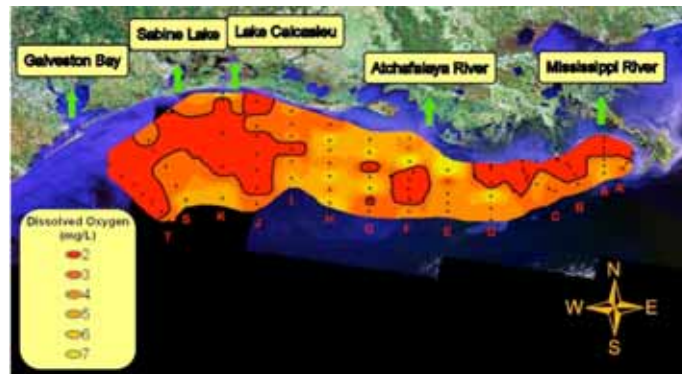
## *Problems:*

- Erosion
- Invasive plants
- Lack of buffer
- Incision
- Loss of floodplain
- Public neglect



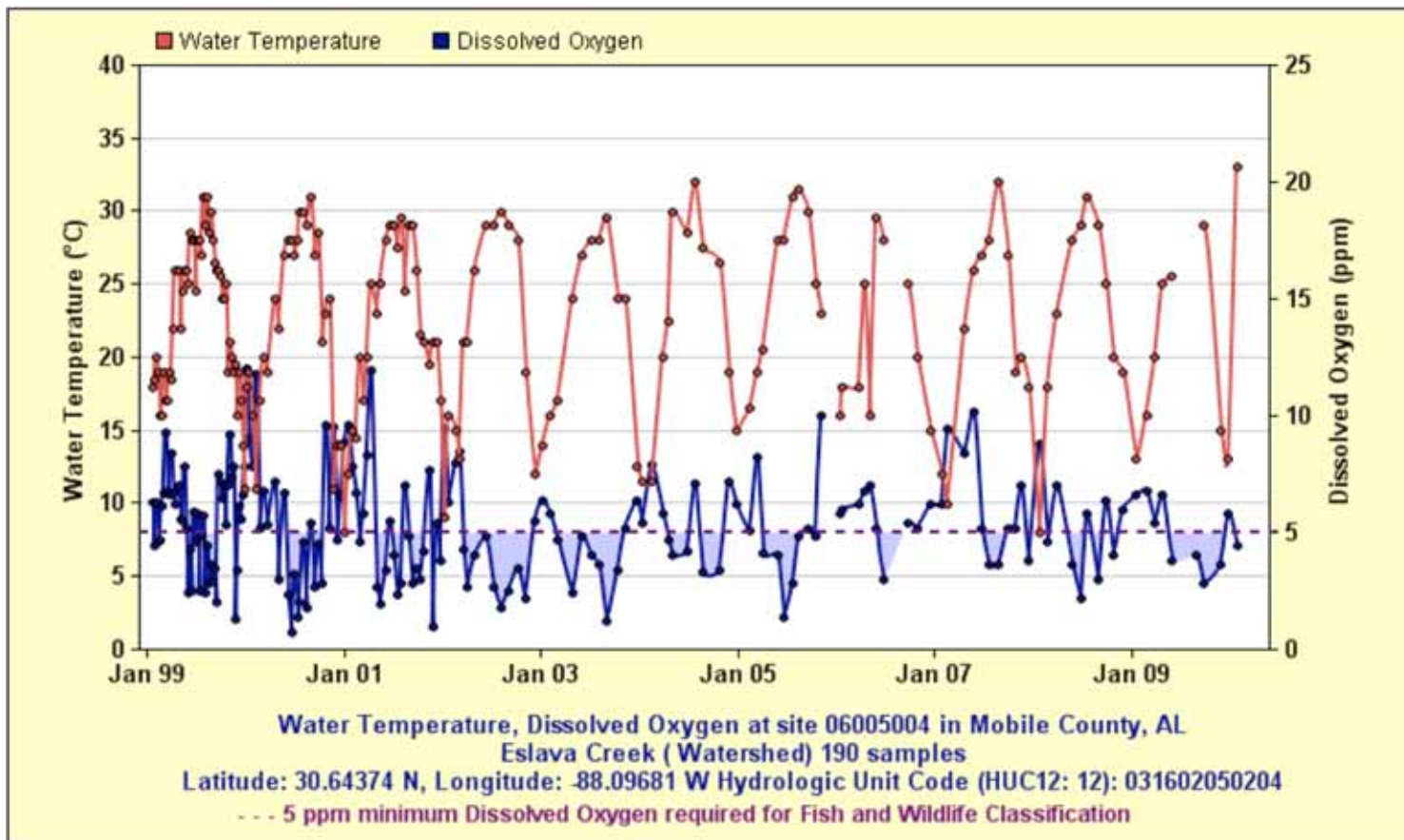
# Awareness

- Watershed and stream degradation on radar



# Data

- Citizen monitoring groups and local and state governments have data to support trends of stream degradation



# Funding

- In some cases, money has been set aside or awarded through grants to address problem





# Action



**POPULAR ARCHITECTURE AND DESIGN 702 618**  
**BRENDAN POPE 115685 ASSIGNMENT 01 HITTING A BRICK WALL**

What is missing?

# Low Cost, Technical Assistance

- 1 Stop Shop?





# EPA Targeted Watershed Grant

- Regional partnership to offer technical assistance for communities around the southeast
  - University of North Carolina, Environmental Finance Center
  - North Carolina State University
  - Auburn University
  - Southeast Watershed Forum

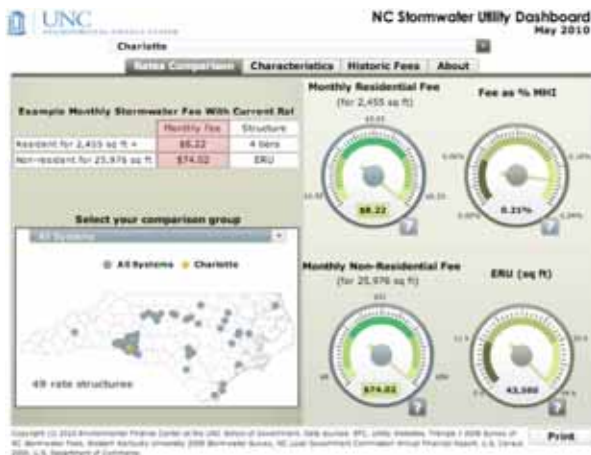


# SERWQAN

- That's right - Southeast Regional Water Quality Assistance Network
- Capacity Building



- Community application
- Main categories:
  - 1) Financial Planning and Assistance
  - 2) Water Quality and Watershed Management
  - 3) Watershed Planning and Participation
  - 4) Project Implementation

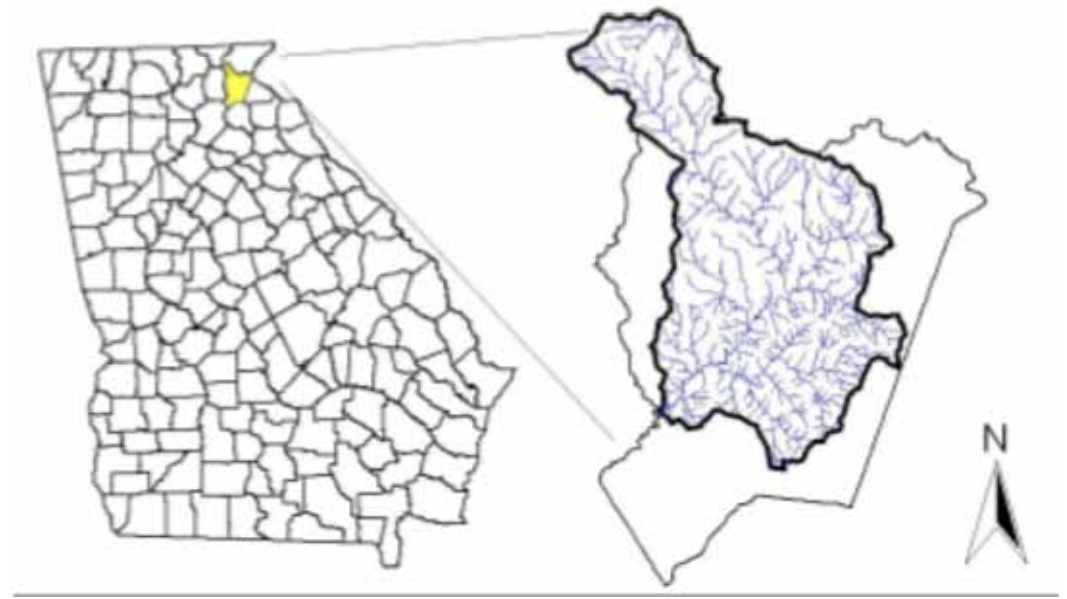


# Soque River Watershed, GA

- City of Cornelia
- Soque River Watershed Association
- Completely contained within Habersham County, northeast Georgia



Mark A. Susinno, natureartists.com



# What did they need?

- *Stormwater management and erosion and sediment control from existing and anticipated sources.*
- *Local capacity building*
  - *watershed financing,*
  - *conservation planning, and*
  - *local codes and ordinances conservation, green infrastructure, and are protective of water resources*





# Assistance Provided

- Workshops for local government officials
  - Model Ordinances
  - Growth Readiness



# Assistance Provided

- Design for stream restoration project



# Lessons Learned

- Know your audience
- Listen
- Be flexible



# Little River Canyon, AL

- Top of Alabama Regional Planning Commission
- Little River Canyon Watershed
- Outstanding National Resource Water



# What did they need?

- *Watershed protection program focused on maintaining and protecting the excellent local water quality of the Little River*
  - *Education*
  - *On-the-ground projects*



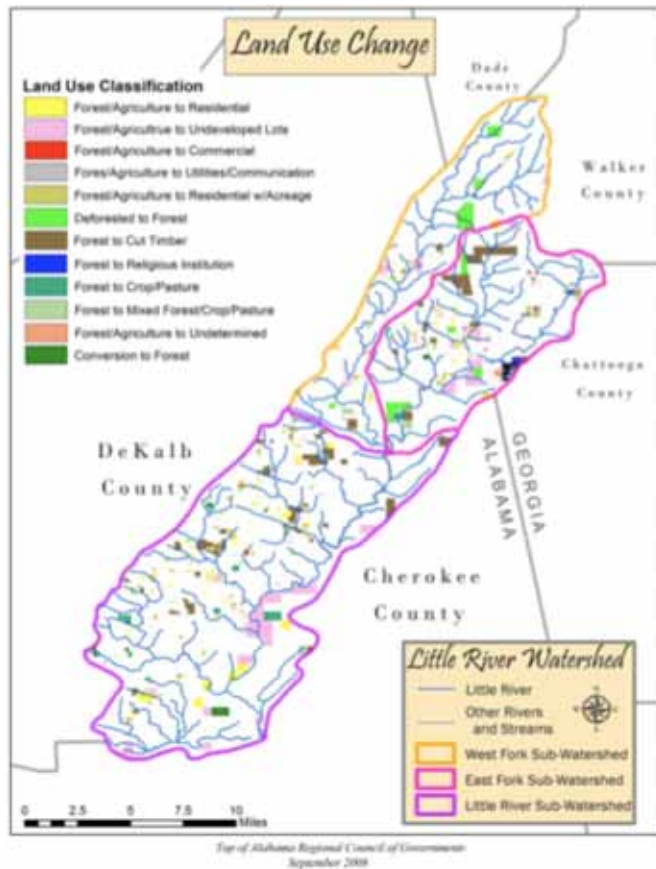
# Assistance Provided

- Developer seminar – Green From the Start
- Technical writing support – Watershed plan, Rural Development Guidelines



# Assistance Provided

- Engineering Designs – Stormwater harvesting
- Stakeholder Engagement



# Lessons Learned

- It is worthwhile to work in ‘non-trashed’ watersheds





# Lenoir, NC

- Lower Creek Watershed impaired, urban runoff
- Floodplain development
- Aesthetically displeasing (ugly)



# What did they need?

- *Technical design assistance*
  - *On-the-ground practices to improve water quality*
- *Watershed education*



# Assistance Provided

- Planning, design, implementation, evaluation, maintenance, and education
  - 5 acre stormwater wetland
  - Stream restoration (2,000 lf)



# Lessons Learned

- Community engagement is critical



# Jasper, AL

- Impaired urban streams
- City of Jasper
- Black Warrior Clean Water Partnership



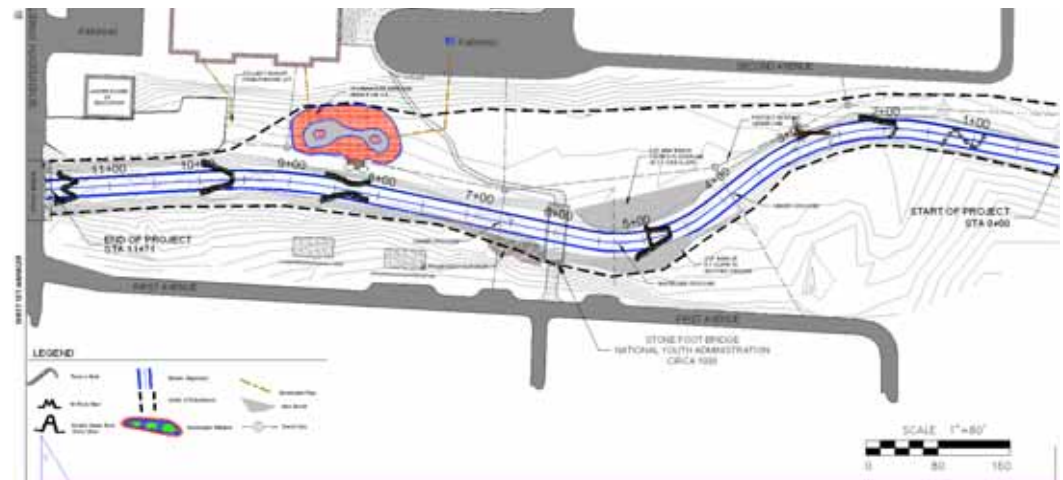
# What did they need?

- *Technical design assistance*
  - *On-the-ground practices to improve water quality*
- *Watershed education*



# Assistance Provided

- Engineering designs for stream enhancement and stormwater wetland



# Assistance Provided

- Community watershed education
  - Seminars, Field tours
  - Technical trainings





# Lessons Learned

- Supportive local government representatives make all the difference in the world



# Lessons Learned

- Demonstration = Understanding
- Local involvement & ownership
- Creative design & funding
- Monitoring & maintenance
- Community support for water quality & recreation
- Bondo gets a thumbs up



# Questions?

- [www.serqwan.org](http://www.serqwan.org)
- Final Report, Community Summaries

