



Northland NEMO Program

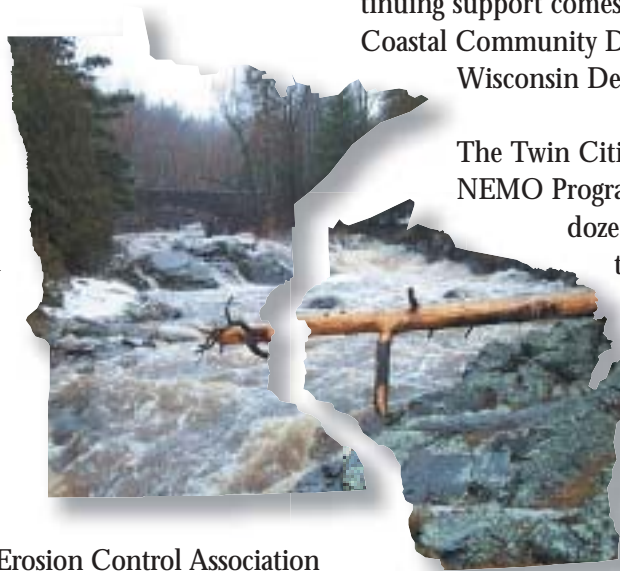
Program Initiated: **January, 2000**

How the Program Developed *How/Where NEMO Works*

In the Land of 10,000 Lakes, the importance of high quality water resources is well appreciated by residents. Interest in the NEMO Program from the upper Midwest came early and from several different sources.

In the western Lake Superior Basin, the Minnesota Sea Grant Program in Duluth and the University of Wisconsin- Superior Cooperative Extension Program were focusing on the bi-state Minnesota/Wisconsin Lake Superior Watershed. The rapidly urbanizing Twin Cities region formed the other area of interest in NEMO.

A consortium of partners headed by the Minnesota Erosion Control Association and the Minnesota Department of Natural Resources coordinated the Twin Cities' effort. Staff from the National NEMO Hub office held scoping sessions in Duluth and the Twin Cities in 1999 and 2000 to help organize both efforts. These two programs have since joined together and are now coordinating their outreach efforts under the Northland NEMO moniker.



The Lake Superior Basin Program began with the bi-state Minnesota/Wisconsin Lake Superior watershed, and has begun to spread its efforts to surrounding areas. This portion of the Northland NEMO is particularly interested in working with small underdeveloped communities, and is working with a variety of partners to provide both educational and technical assistance to these under-served municipalities. Initial and continuing support comes from NOAA Sea Grant's Coastal Community Development Program and the Wisconsin Department of Natural Resources.

The Twin Cities portion of the Northland NEMO Program is made up of more than a dozen partners who help deliver the message in various regions of Minnesota and western Wisconsin. Through this network of statewide partnerships, the program can quickly address the needs and land use issues specific to individual communities. These partnerships bring together regional, state and

private natural resource agencies and organizations to deliver a coherent and consistent message to the decision-makers and citizens of Minnesota and Wisconsin. The partners also support Northland's efforts, either financially or through in-kind donations of time and resources. Funding for this two year-old program has come from: the Metropolitan Council, a regional

Photo opposite page, courtesy of the Northland NEMO Program.

Northland NEMO's outlook is bright. There has been overwhelming interest in their programs, both from local officials and citizens.

planning agency to the Minneapolis/St. Paul area; the McKnight Foundation, a philanthropic arm of the 3M Corporation; the Minnesota Department of Natural Resources, and; the Clean Water Act Section 319 Nonpoint Source Program.

Accomplishments

Northland NEMO has been developing and presenting programs for communities along the North Shore of Lake Superior, both in the Duluth Minnesota area and in northern Wisconsin communities such as Bayfield and Ashland. Focusing on the *Linking Land Use to Water Quality* Program, they have developed current and future impervious surface maps of the communities to drive the message home. Northland NEMO partners participated in a recent Network Hub training session on the Impervious Surface Analysis Tool (ISAT), to help bring customized and accurate assessment of impervious surface and its impacts to their communities. They are also exploring new topical areas by working closely with the timber industry to determine the effects of timber and forest management practices on water quality, as well as working with their Twin Cities colleagues to develop a Lakes NEMO workshop.

In the Twin Cities region dozens of education programs have been given during the pilot phase, generating considerable interest from participating and surrounding communities such as Scott County, one of the most rapidly growing counties in the state. In April 2002 Northland NEMO was awarded a Section 319 grant which is helping to take the program from the pilot stage to an expanded focus area 150-miles around the Twin Cities. The NEMO Team is working to develop a series of educational modules on topics from low impact development and reducing impervious surfaces to landscape design with native plants.

The Future

Northland NEMO's outlook is bright. There has been overwhelming interest in NEMO programs, both from local officials and citizens. The program is gearing up to meet this demand, and is tracking the success of its work along the way. Already, program staff are starting to see changes to local plans and ordinances and requests for more follow up information.

On the Web at: www.seagrant.umn.edu/water/nemo.html
www.mnerosion.org/nemo.html

Northland NEMO is a charter member of the National NEMO Network.

Program Partners

- University of Wisconsin-Superior Cooperative Extension
- Minnesota Erosion Control Association
- Metropolitan Council Environmental Services
- Metropolitan Council Community Development
- Minnesota Department of Natural Resources
- Board of Water & Soil Resources
- University of Minnesota Extension
- University of Minnesota Water Resources Center
- Minnesota Pollution Control Agency
- Minnesota Offices of Environmental Assistance
- Minnesota Sea Grant Program
- Minnesota Association of Soil & Water Conservation Districts
- Scott County Community Development
- Dakota Soil & Water Conservation District
- Friends of the Mississippi River
- Natural Resources Research Institute
- 1,000 Friends of Minnesota
- Lake Superior Research Institute

Contacts

Jay Michels
Twin Cities NEMO Coordinator
jmichels@skypoint.com
651-351-0630

Sue O'Halloran
Wisconsin NEMO Coordinator
sohallor@staff.uwsuper.edu
715-394-8525

Jesse Schomberg
Duluth NEMO Coordinator
jschombe@d.umn.edu
218-726-6182

