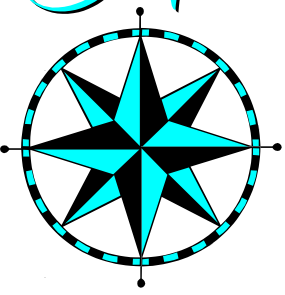


# NEMO

## Alabama



# Inch by Inch everything is a cinch By the Yard everything is hard

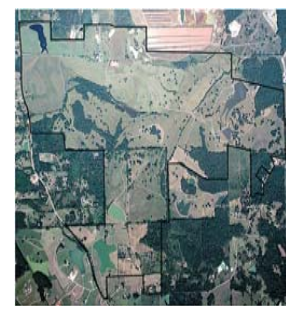
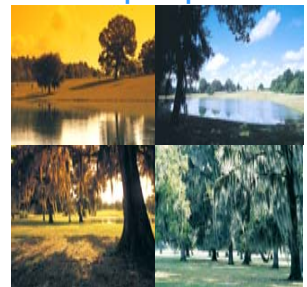
**Inch** - The Waters: A new subdivision model in Alabama



Tree line becomes middle of the road, 100 year old oaks

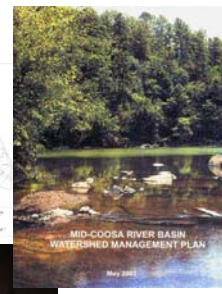
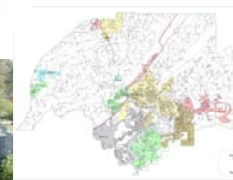
Don't bother memorizing the view, it's not going anywhere...Just outside this window lies a master stroke by the Creator. There's simply no better way to describe it. The moment we saw it we knew. Land this special should be protected. Honored. Preserved for countless generations to come. But how? Considering how often land is clear cut and reshaped, we were certain that retaining it's natural splendor must be the more difficult option. But we were wrong. As it turns out, preserving the beauty of the landscape is an easier task than spoiling it. You simply leave it alone. Let it be. So that's what we have done. Identify every notable inspiring natural feature - scenic lakes, rolling hills, heritage oaks and flowering meadows - and remove them from the land we are developing. In a sense, we've simply done less. You on the other hand get a whole lot more.

- Preserving the natural landscape
- 1400 acres
- 60% left open space



**Inch** - Clean Water Partnerships formed in 10 watersheds to coordinate NEMO practices:

- Basin facilitators
- Steering committees of local stakeholders
- Limited elected officials attend
- Charged with conducting natural resource inventories



**Inch** - Sponsored Growth Readiness Workshops with the South East Watershed Forum. Field trip to local neighborhood revealed practices are still in need of improvement



Arrows show what was really on the ground and it was not "open space" but our graduates knew the difference.



**Inch** - Planning for Greener Growth Working one on one with Phase II municipalities throughout the state:

- Foley
- Gadsden
- Tuscaloosa
- Auburn



**Inch** - Workshops Workshops Workshops



**Inch** - Stream Restoration Projects



**Inch** - Rain Gardens and Constructed Wetlands Demonstrations



Rain Garden at Benjamin Russell High School

- Multi style residences in hamlets
- Narrow, friendly streets
- Lake front property for recreation



Sand Filter Decentralized Waste Water systems