

“Never More Than a Page to Ponder!”

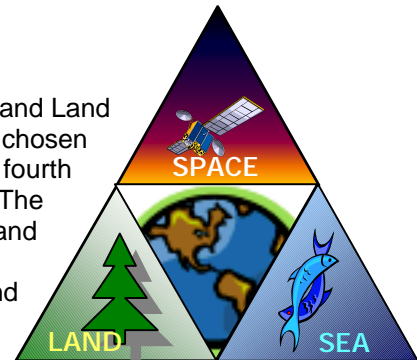


National NEMO Network Interagency Work Group

Quick & Painless Update: July 2001

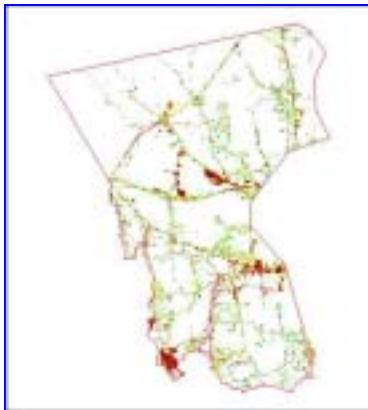
Land-Sea-Space Grant Collaboration Supports NEMO

A group of NASA, NOAA, and USDA staff representing the Space, Sea and Land Grant systems, and unofficially calling itself the “Earth Grant” team, has chosen UConn to house the next *Geospatial Extension Specialist* position – the fourth in the nation, and the first to be funded via this 3-agency collaboration. The team (which includes Work Group members Julius Dasch, Jim Murray, and Mike O’Neill) has made a 3-year commitment to NEMO, which will be expanding both its instate and national geospatial work in developing and disseminating remote sensing and GIS tools and training.



National Sea Grant Coastal Community Development Program Underway

The new Sea Grant *Coastal Community Development Program* (CCDP) provides \$50,000 per year in base funding for Sea Grant programs to put toward efforts dealing with growth in the coastal zone and its impacts on coastal and marine resources. NEMO is cited as a prominent example of such a program, and several Sea Grant programs will be using some or all of the CCDP funding to support NEMO projects. This welcome new funding source has already jump-started new Network projects in **Michigan**, **Washington state**, and **Delaware**. In **Connecticut**, it will provide much-needed funding for key NEMO staff (thanks to Work Group member Ed Monahan).



Technology Update: Imperviousness Direct from Space!

NEMO’s sister project, the NAUTILUS NASA Center, has developed a technique for directly estimating impervious cover from raw satellite data. This greatly improves both the accuracy of our estimates, and the ease and geographic flexibility with which we can make those estimates. The town of Waterford, CT is shown in the picture to the right (the i.s. data can be seen tracking the road system quite well). NEMO is working with the NOAA Coastal Services Center to make the technique applicable to a broader audience. More to come...

NEMO in the Media

Thanks to Work Group member Stacey Craddock, a **commentary** piece on the critical role of education in the success of new EPA water regulatory programs appeared in EPA’s Nonpoint Source News-Notes in March. Go to: http://www.epa.gov/owow/info/NewsNotes/issue64/64_issue.pdf

Remote Sensing-Enhanced Outreach Education as a Decision Support System for Local Land Use Officials, appearing in the October 2000 issue of the journal *Photogrammetric Engineering and Remote Sensing* (PE&RS), won the **ESRI 2001 Award for the Best Scientific Paper in Geographic Information Systems**.

A 10-minute **videotape** about NEMO’s work with Connecticut communities has been produced by USDA/CSREES, as a segment of their video magazine show, *Partners*. Work Group members should already have one in hand; if not, contact us and we’ll get you one, *pronto*.



USDA videographer shoots a thrilling town hall scene.